

Registration No. :

--	--	--	--	--	--	--	--	--	--

Total number of printed pages – 4

B. Tech  
PECI 5405

**Seventh Semester (Special) Examination – 2013**  
**ESTIMATION, COSTING AND PROFESSIONAL PRACTICE**

BRANCH CODE : CIVIL

QUESTION CODE : D 477

Full Marks – 70

Time : 3 Hours

Answer Question No. 1 which is compulsory and any **five** from the rest.  
The figures in the right-hand margin indicate marks.

1. Answer the following questions : 2×10
- (a) What is plinth area estimate ?
  - (b) What is the unit for earth work in hard soil and pre cast jail work ?
  - (c) What are the data required for preparation of an estimate ?
  - (d) Define 'head event' and 'tail event'.
  - (e) Differentiate between general overhead and job overhead.
  - (f) What is the necessity of specification?
  - (g) What are the disadvantages of open specification ?
  - (h) What do you mean by operating cost of an equipment ?
  - (i) What is the objective of project management ?
  - (j) State various resources of a project.
2. Estimate the quantities of the following items of work for a building as shown in **Fig 1**.
- (a) Earth work in excavation in foundations 5
  - (b) First class brick work (1 : 4) in cement mortar 5

P.T.O.

3. Estimate the quantities of following items of work for Culvert as shown in **Fig 2**.
- (a) Earthwork in excavation in foundation 5
- (b) Cement concrete (1 : 3 : 6) in foundation 5
4. (a) A project consists of eight events having predecessor relationships as under, Construct the network. 5

Event	Immediate predecessor	Event	Immediate predecessor
10	–	50	30,40
20	10	60	30,50
30	10	70	60
40	20,30	80	40,70

- (b) Sketch and explain the various errors in drawing a network diagram. 5
5. (a) Find the rate analysis per sqm of white washing single coat. 5
- (b) Find the rate analysis per sqm of DPC, 4 cm thick of cement concrete 1:2:4 with one coat of bitumen. 5
6. (a) Outline the detailed specification for Asbestos Cement Corrugated sheets. 5
- (b) Write the detailed specification for second class brick work on lime mortar. 5
7. (a) Differentiate between Float and Slack. 5
- (b) Findout the quantity of cement and sand required for one square metre of cement plaster (1 : 6), 1.25 cm thick. 5
8. Write short notes on any **two** of the followings : 5×2
- (a) General specification for second class building
- (b) Construction schedules for jobs
- (c) Special repair estimate

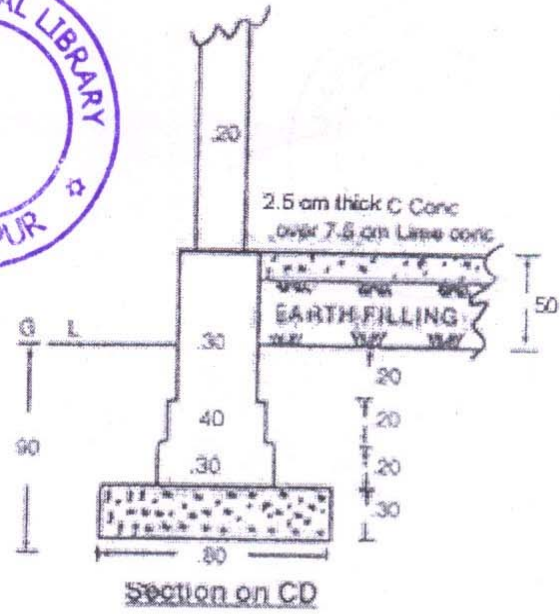
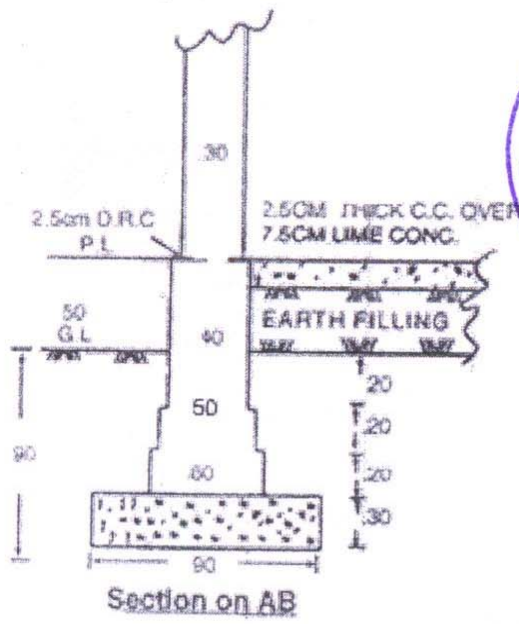
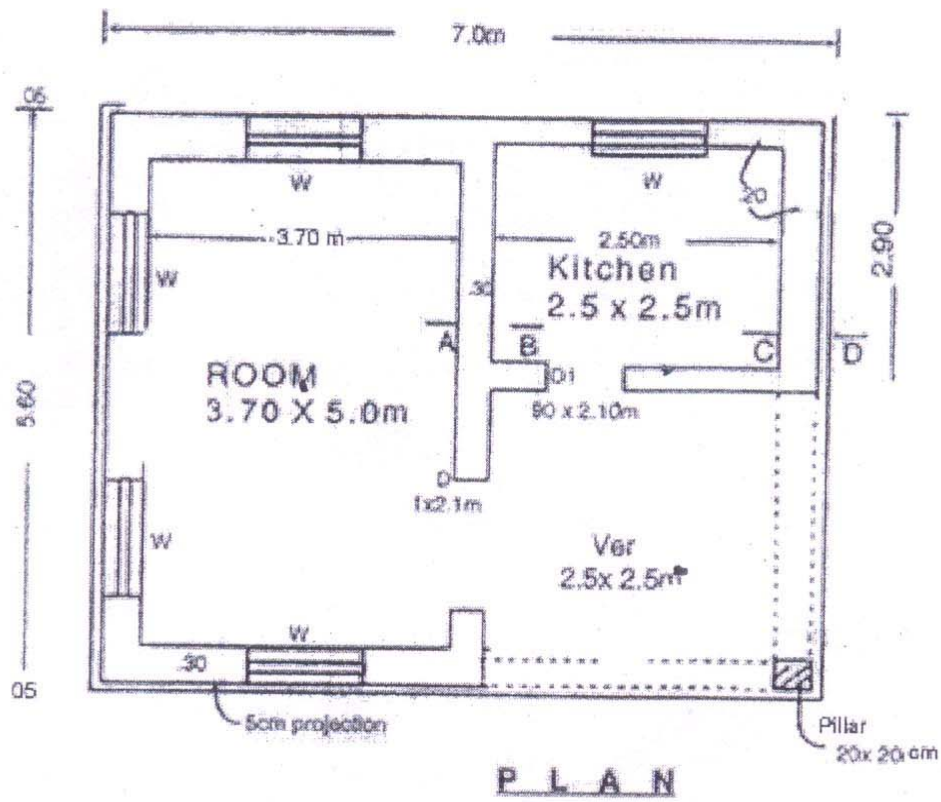
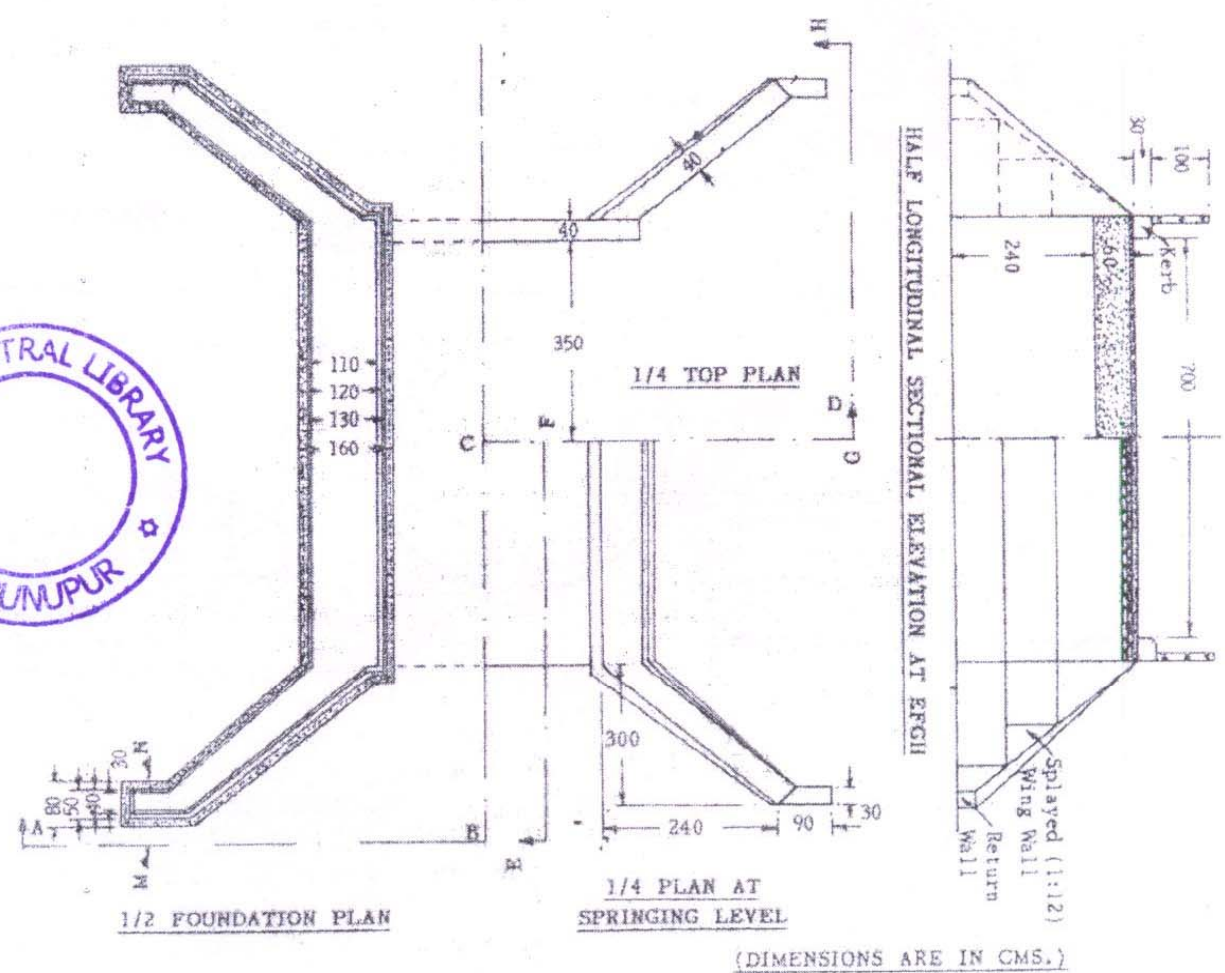
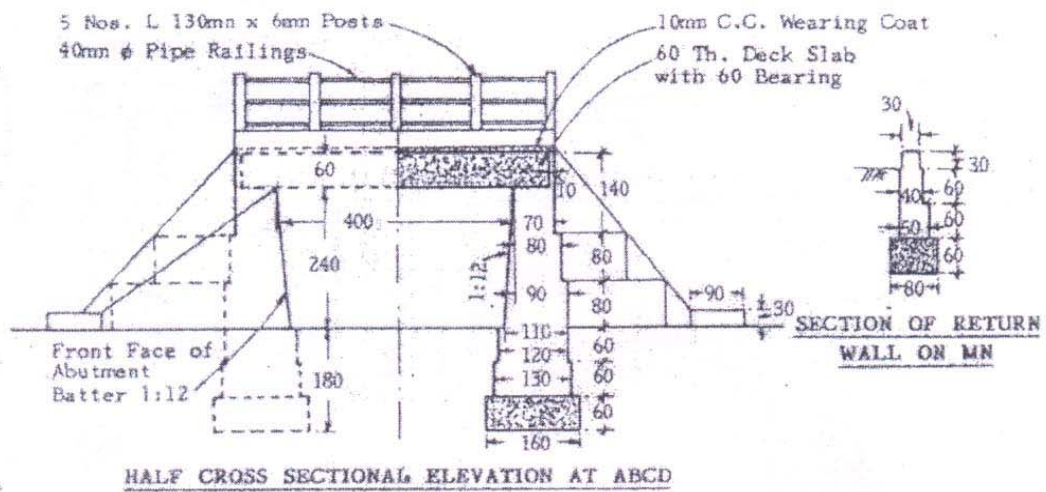


Figure - 1



**SLAB CULVERT**

Figure - 2